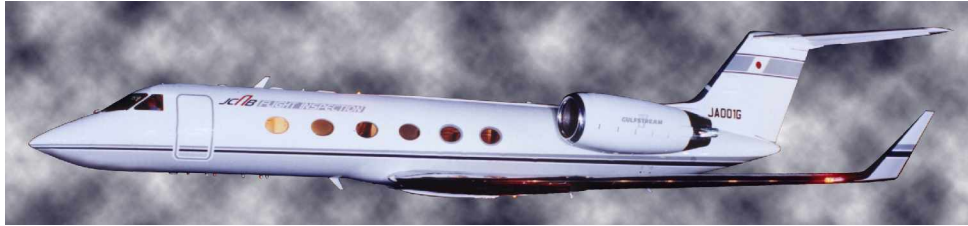


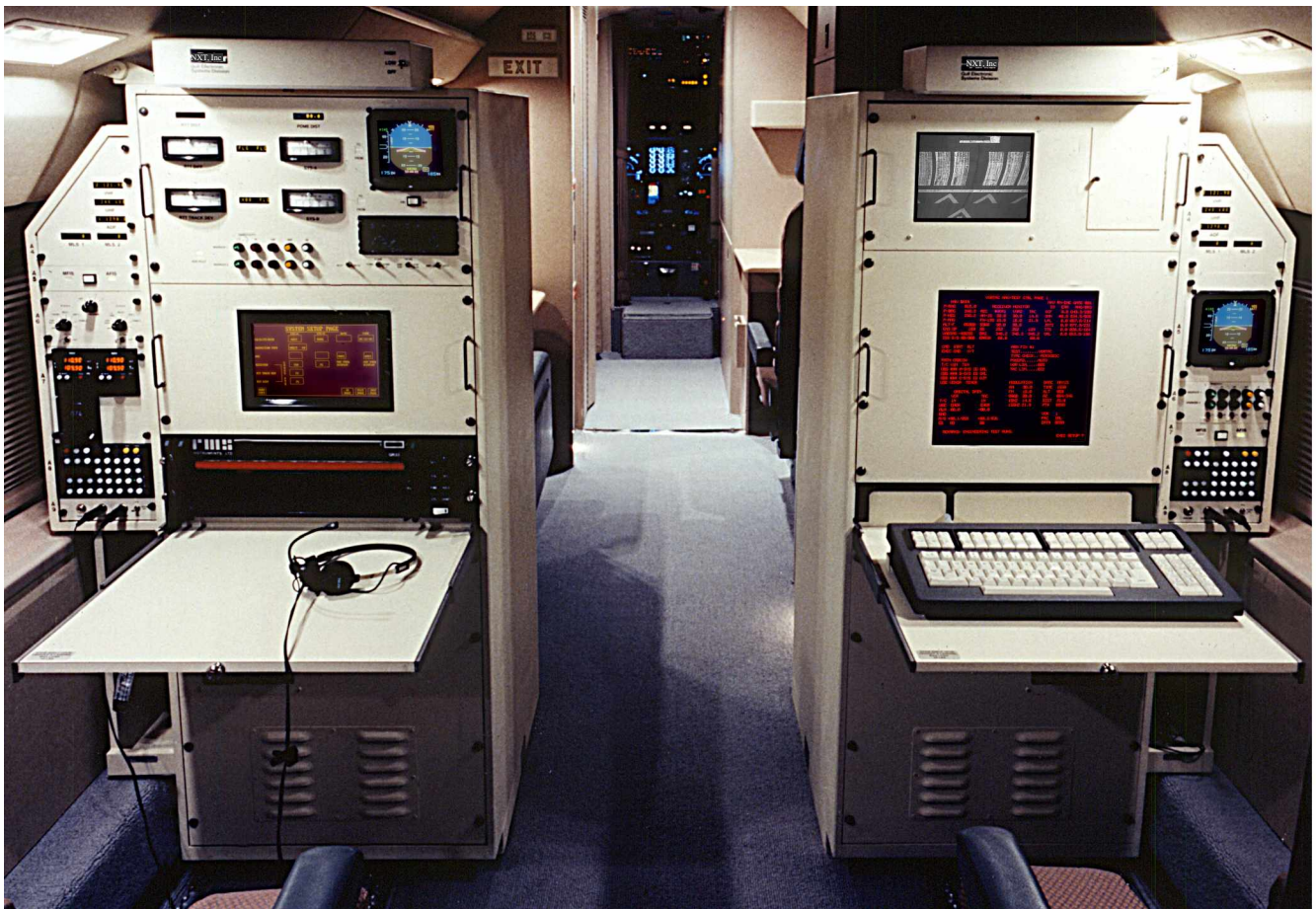


Corporate  
3100 West Britton Rd., Ste F  
Oklahoma City, OK 73120  
P 405-286-1746 F 405-286-4188

Engineering  
2805 Veterans Memorial Hwy, Ste 6  
Ronkonkoma, NY 11779  
P 631-738-9060 F 631-738-9062  
[www.nxt-afis.com](http://www.nxt-afis.com)

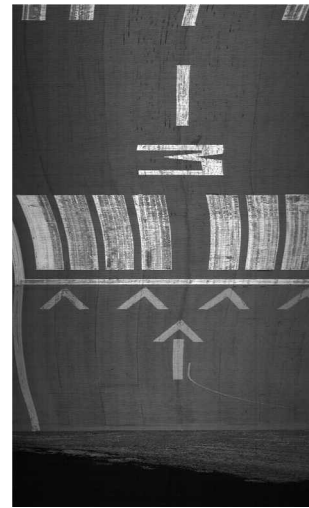


Japan Civil Aviation Bureau Gulfstream IV



**Features:**

- Automatic & Semi Automatic Inspection
- AMLCD & Plasma Displays
- Multi-processor Inspection/ Navigation Computer Unit
- Multiple Positioning Modes:
  - \*GPS/IRU Hybrid
  - \*DME/IRU
  - \*GPS/IRU/TVPS
  - \*DME/DME
- Data Logger
- Data Base / Program Loader
- Signal Analysis and Receiver Calibration Console
- Digital Signal Plotter
- Frequency Display
- Television Position System (TVPS)



**Threshold Fix**

Captures 1000 running feet of threshold end of runway. Fixes position of aircraft within +/- 1ft atk and +/-0.5ft xtk. Used to back correct position data in ILS3, MLS and PAR/PAPI

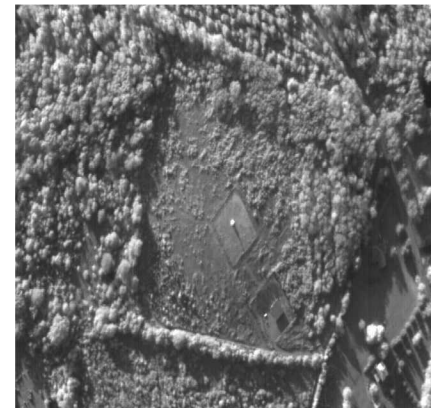
**Capabilities:**

- VOR/DME/TACAN
- ILS 1/2/3 CAT I/II/III
- GPS NP & VOR NP
- NDB
- VASI/PAPI/PAR
- VHF & UHF Ground Stations
- Radar Surveillance



**TVPS Camera**

4000 Pixel Digital Output Line Scan  
Heated Window for Dew Free Operation  
Self Contained Power Supply



**VOR Position Fix**

5000ft altitude fix for radial and orbit inspection, and 2000ft ILS2

**Accuracy:**

Meets All Requirements of ICAO Annex 10,  
ICAO Document 8071, and FAA OAP 8200.1  
Selectable Tolerance Levels; JCAB / FAA / ICAO

